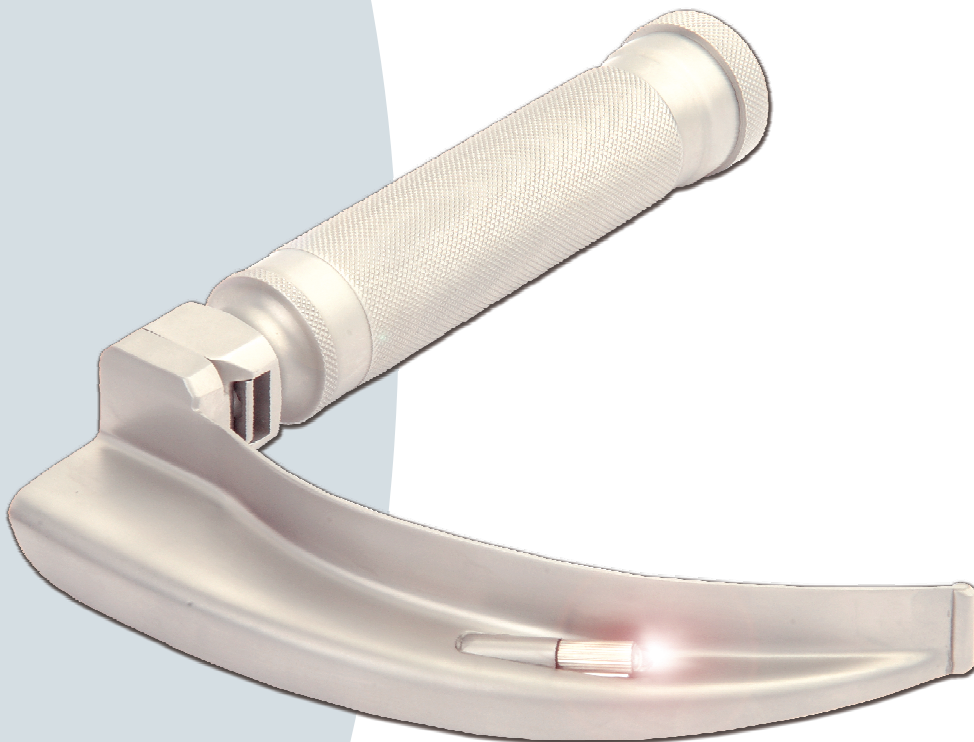


□ LARYNGOSCOPE & SPARES

NET Laryngoscopes are simply specialized torches with a handle containing the batteries and a blade which holds the bulb. The NET brand ensures that the item is safe for use in Anesthesia / Resuscitation for endotracheal intubation.

...true
scope



inside

- ▶ Laryngoscope Blades SS
- ▶ Macintosh type
- ▶ Miller type
- ▶ Laryngoscope Handles SS/BCP
- ▶ Medium C size
- ▶ Penlight AA size
- ▶ Laryngoscope Bulbs
- ▶ Fibre Optic Laryngoscope



□ LARYNGOSCOPE & SPARES



MACINTOSH TYPE CURVED LARYNGOSCOPE BLADES - Stainless Steel

Polished Finish



| Macintosh Type Curved Laryngoscope Blades - Stainless Steel | | |
|---|-----------------|-------------------|
| Blade Size | Polished Finish | Satin/Dull Finish |
| 0 | LS201 | LS202 |
| 1 | LS203 | LS204 |
| 2 | LS205 | LS206 |
| 3 | LS207 | LS208 |
| 4 | LS209 | LS210 |
| 5 | LS211 | LS212 |

Popular

MC-INTOSH LARYNGOSCOPE SET (With handle)
 LS060 Set with 3 S.S. blades size 0, 1 & 2.
 LS013 Set with 3 S.S. blades size 1, 2 & 3.
 LS014 Set with 4 S.S. blades size 1, 2, 3 & 4.
 LS065 Set with 4 S.S. blades size 0, 1, 2 & 3.

Note: The above sets are satin finish all stainless steel. Other custom made combination of sets available upon request.

Satin/Dull Finish



MILLER TYPE STRAIGHT LARYNGOSCOPE BLADES - Stainless Steel

Satin/Dull Finish

Autoclavable!

LS214
#0



LS216
#1



LS218
#2



LS220
#3



LS229
#4



| Miller Type Straight Laryngoscope Blades - Stainless Steel | | |
|--|-----------------|-------------------|
| Blade Size | Polished Finish | Satin/Dull Finish |
| 00 | LS237 | LS240 |
| 0 | LS213 | LS214 |
| 1 | LS215 | LS216 |
| 2 | LS217 | LS218 |
| 3 | LS219 | LS220 |
| 4 | LS228 | LS229 |

MILLER LARYNGOSCOPE SET (With handle)
LS114 Set with 3 S.S. Blades size 0, 1 & 2.

LS116 Set with 3 S.S. blades size 1, 2 & 3.

Note: The above sets are satin finish all stainless steel. Other custom made combination of sets available upon request.

Popular

BATTERY HANDLES - Suitable for Laryngoscope Blades, given on pervious pages

Polished Finish

Satin/Dull Finish



Autoclavable!

| Battery Handles - Suitable for Laryngoscope Blades | | |
|--|-----------------|--------------------|
| Battery Size | Stainless Steel | |
| | Polished Finish | Satin/Dull Finish |
| Penlight | LS234 | ² LS235 |
| Medium | LS231 | ¹ LS232 |

Note : Battery not included.

□ LARYNGOSCOPE & SPARES

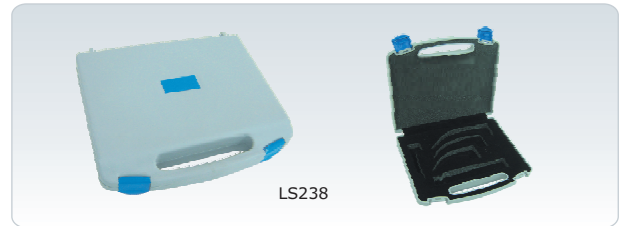


SPARE BULBS FOR LARYNGOSCOPES

- LS401 : Clear bulbs, deluxe quality.
- LS402 : Frosted bulbs, deluxe quality.
- LS405 : Clear bulbs, super deluxe quality, suitable for polished blades.
- LS406 : Frosted bulbs, super deluxe quality, suitable for polished blades.
- LS405d : Clear bulbs, super deluxe quality, suitable for satin/dull blades.
- LS406d : Frosted bulbs, super deluxe quality, suitable for satin/dull blades.
- LS407 : Conventional LED Bulb.



PACKING FOR LARYNGOSCOPE SETS



LS227
Zip Case for laryngoscope sets (folder type).

LS227D
Zip Case for laryngoscope sets (D-type).

LS238
Plastic Case for laryngoscope sets

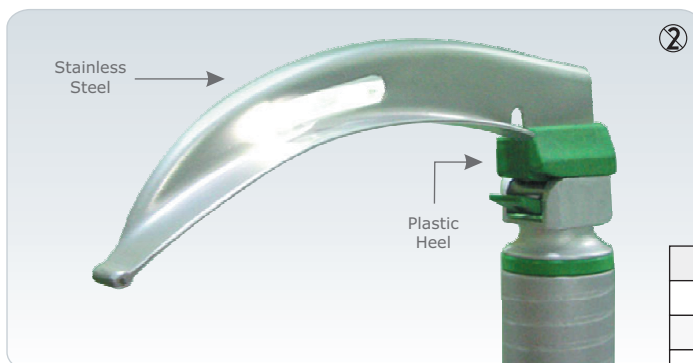
LARYNGOSCOPE WITH STANDARD ILLUMINATION - in Satin/Dull Finish



LS120 : The set of four satin blades, includes:
 Curved macintosh type, size: 1,2 & 3,
 Straight miller type, size: 1,
 Spare bulbs - 4 pcs., &
 Stainless steel satin handle uses two alkaline batteries (medium size, 1.5v battery).

FIBER OPTIC LARYNGOSCOPES

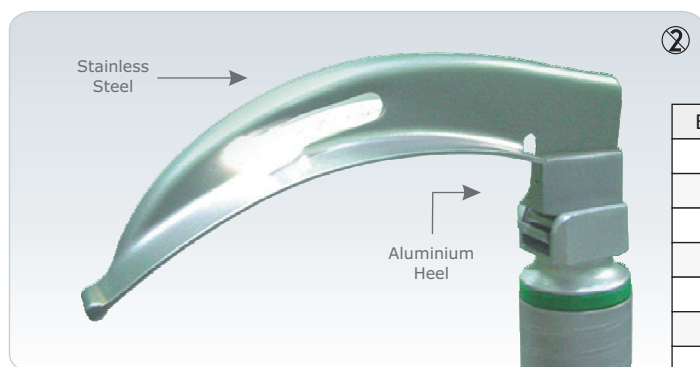
NET SAVER : Disposable Fibre Optic Laryngoscope Blade (Plastic heel, SS Spatula)



| Blade Size | Mackintosh Type | Miller Type |
|------------|-----------------|-------------|
| 00 | - | LS311 |
| 0 | - | LS312 |
| 1 | LS301 | LS313 |
| 2 | LS302 | LS314 |
| 3 | LS303 | LS315 |
| 4 | LS304 | LS316 |
| 5 | LS305 | - |

Packing : Supplied in Peel off Pouch

NET PRIMA : Disposable Fibre Optic Laryngoscope Blade (Aluminium heel, SS Spatula)



⊗

| Blade Size | Mackintosh Type | Miller Type |
|------------|-----------------|-------------|
| 00 | - | LS330 |
| 0 | LS320 | LS331 |
| 1 | LS321 | LS332 |
| 2 | LS322 | LS333 |
| 3 | LS323 | LS334 |
| 4 | LS324 | LS335 |
| 5 | LS325 | - |

Packing : Supplied in Peel off Pouch

NET-MODULAR : Reusable Fibre Optic Laryngoscope Blade with detachable Fibre Optic tube.



Autoclavable!

| Blade Size | Mackintosh Type | Miller Type |
|------------|-----------------|-------------|
| 00 | - | LS350 |
| 0 | LS340 | LS351 |
| 1 | LS341 | LS352 |
| 2 | LS342 | LS353 |
| 3 | LS343 | LS354 |
| 4 | LS344 | LS355 |
| 5 | LS345 | - |

NET-INTEGRATED : Reusable Fibre Optic Laryngoscope Blade with in built Fibre Optic tube.



Autoclavable!

| Blade Size | Mackintosh Type | Miller Type |
|------------|-----------------|-------------|
| 00 | - | LS370 |
| 0 | LS360 | LS371 |
| 1 | LS361 | LS372 |
| 2 | LS362 | LS373 |
| 3 | LS363 | LS374 |
| 4 | LS364 | LS375 |
| 5 | - | - |

LARYNGOSCOPE HANDLE WITH INBUILT LED BULB



Autoclavable!

| Code | Size |
|-------|--|
| LS379 | Disposable Handle Standard 2xC Size Battery |
| LS380 | Reusable Standard Handle : 2xC Size Battery |
| LS381 | Reusable Stubby Handle : 2xAA Size Battery |
| LS382 | Reusable Penlight Handle : 2xAA Size Battery |

| Code | Description |
|-------|--|
| LS383 | Hyper LED Lamp for fibre optic Handle. |